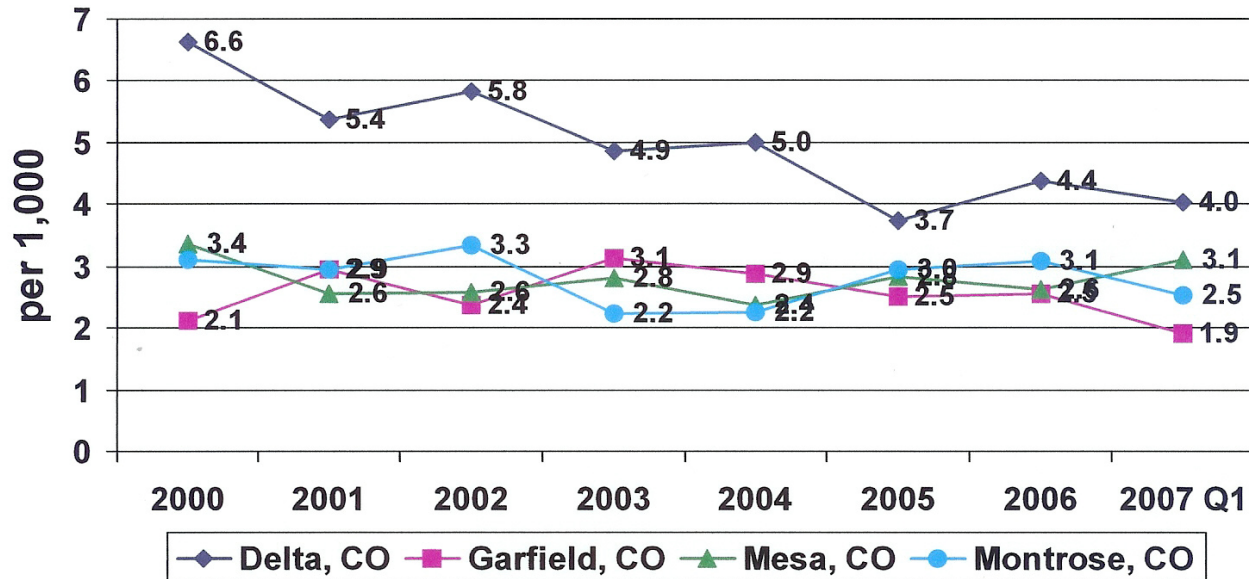


• **Pancreas and Liver Disorders**

Delta County’s rates are consistently the highest among the four counties. Rates for the other counties across the time period are similar. This category includes cirrhosis and alcoholic hepatitis, malignancy of hepatobiliary system or pancreas, and pancreas and liver disorders. Garfield County’s hospitalization rates are the highest among the counties for most years, surpassed only by Delta County in 2003 and 2006.

**Figure 83. Pancreas and Liver Disorders Hospitalizations by County of Residence**



• **Red Cell and Clotting Disorders**

Garfield County’s rates show a steady downward trend from 2001- through 2006, with a slight increase in the first quarter of 2007. Garfield County’s rates are generally lower than those for the other three counties.

**Figure 84. Red Cell and Clotting Disorders Hospitalizations by County of Residence**

