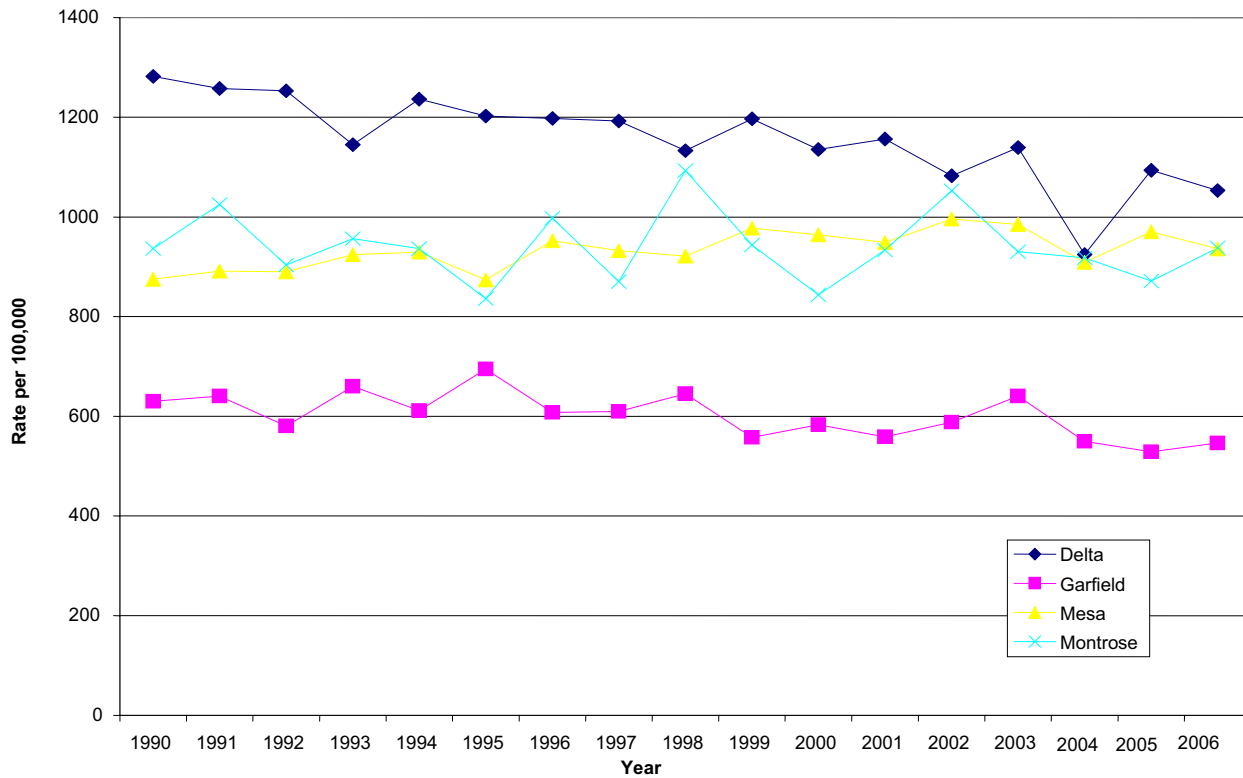


Figure 25. Crude Total Death Rates - Delta, Garfield, Mesa, Montrose Counties



Average, annual, age-adjusted death rates by cause of death are shown in Figure 26 below for the four counties. Cardiovascular disease is the biggest cause of death in all four counties, followed by other heart-related disease and cancer. The rates among the four counties are similar. Please see the "Cause of death" table in Appendix K for the numbers of actual deaths by county and cause.

Figure 26. Average Annual Age-adjusted Death Rates by Cause, 2003-2006

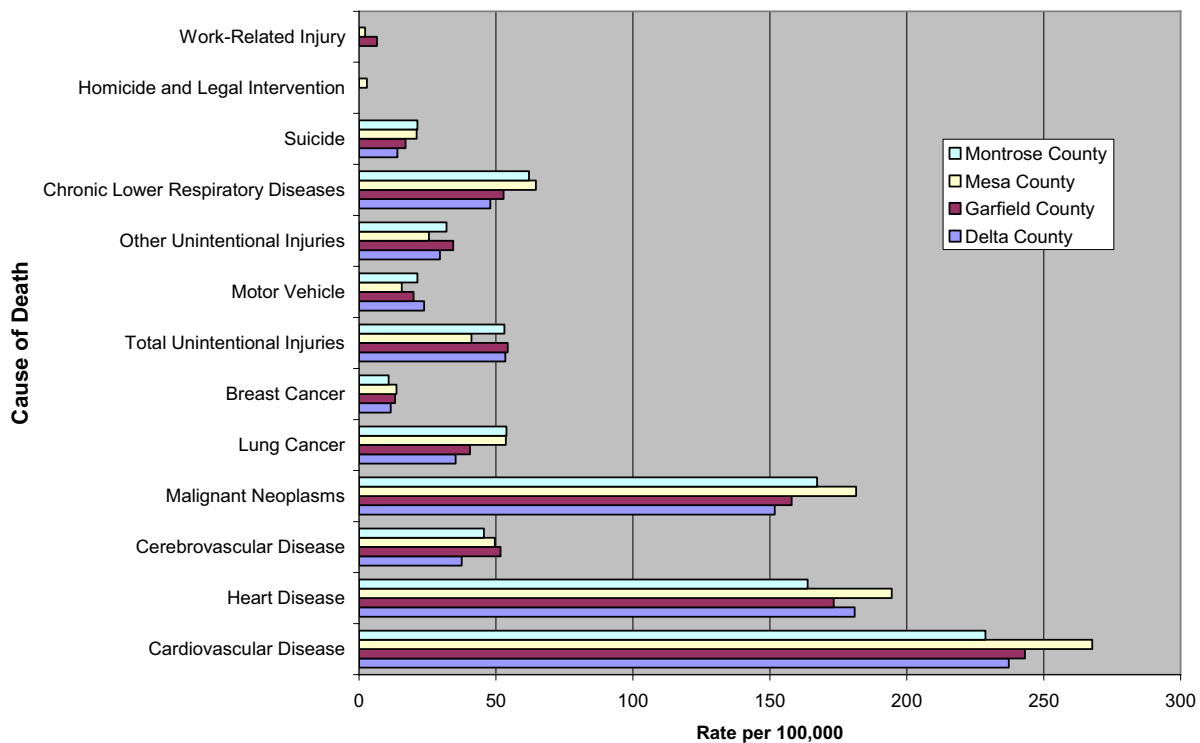


Table 15 provides information on the 2006 age-specific death rates for the four counties. The age distribution of deaths is similar.

Table 15. Age-specific death Rates by County – 2006

Age	Delta County			Garfield County		
	Deaths	Population	Age-Specific Death Rate	Deaths	Population	Age-Specific Death Rate
1-14	*	5,321	*	*	11,290	*
15-24	4	4,159	1	10	7,031	1.4
25-64	58	15,157	3.8	88	29,181	3.0
65+	259	5,708	45.4	187	4,497	41.6
All Ages	323	30,672	10.5	289	52,878	5.5

Age	Mesa County			Montrose County		
	Deaths	Population	Age-Specific Death Rate	Deaths	Population	Age-Specific Death Rate
1-14	7	24,507	0.3	0	7,636	0
15-24	19	21,127	0.9	6	5,342	1.1
25-64	263	68,064	3.9	60	19,480	3.1
65+	970	19,954	48.6	296	5,920	50
All Ages	1,268	135,473	9.4	36	38,908	9.4

*indicates one or two events

Age-adjusted rates are adjusted to the 2000 U.S. population using the direct method applied to 10-year age groups. Source: Health Statistics Section, Colorado Department of Public Health and Environment.

The figures on this page portray death rates by age group and gender for Garfield County residents over the period 1990 through 2006.

Figure 27. Death Rates for Garfield County Males by Age Groups

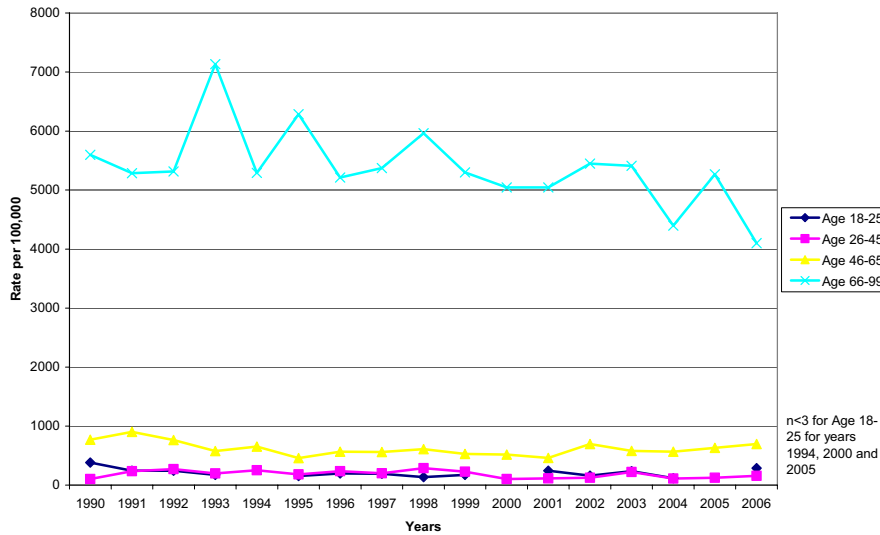
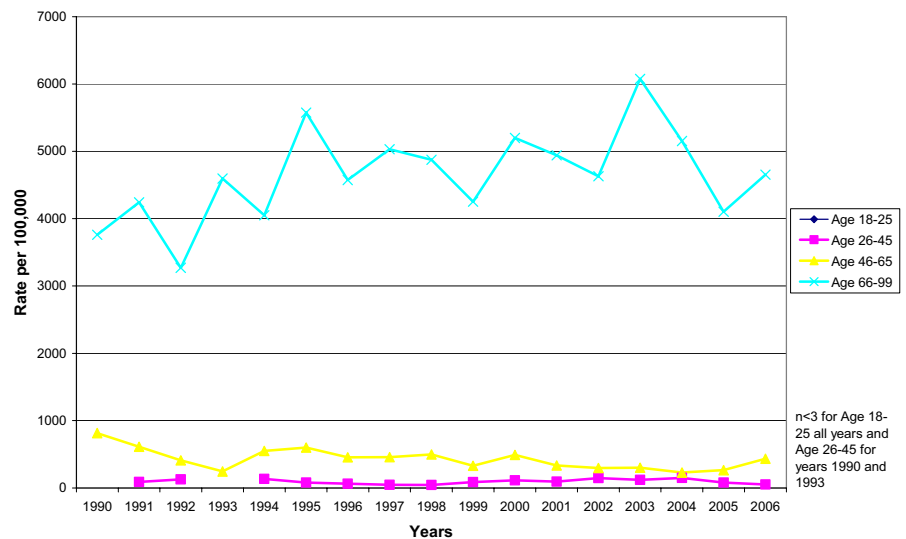


Figure 28. Death Rates for Garfield County Females by Age Groups



Appendix L provides statistical information on cause of death by race/ethnicity for 2006. Only data for “all races”, non-Hispanic Whites and Hispanic Whites are shown in this table. Individuals with other racial or ethnic backgrounds are a relatively small percentage of the population of the four comparison counties, and thus, make a correspondingly small contribution to the overall death statistics. Generally speaking, the distribution of cause of death for Hispanic Whites is either lower than or similar to that of

non-Hispanic Whites in all counties. One notable exception is fact that unintentional injuries accounted for a higher percentage of total deaths for Hispanic Whites than for non-Hispanic Whites in Garfield County.

The figure below shows the leading causes of disease-related death by county for 2006.

Figure 29. Leading Causes of Death by County, 2006

