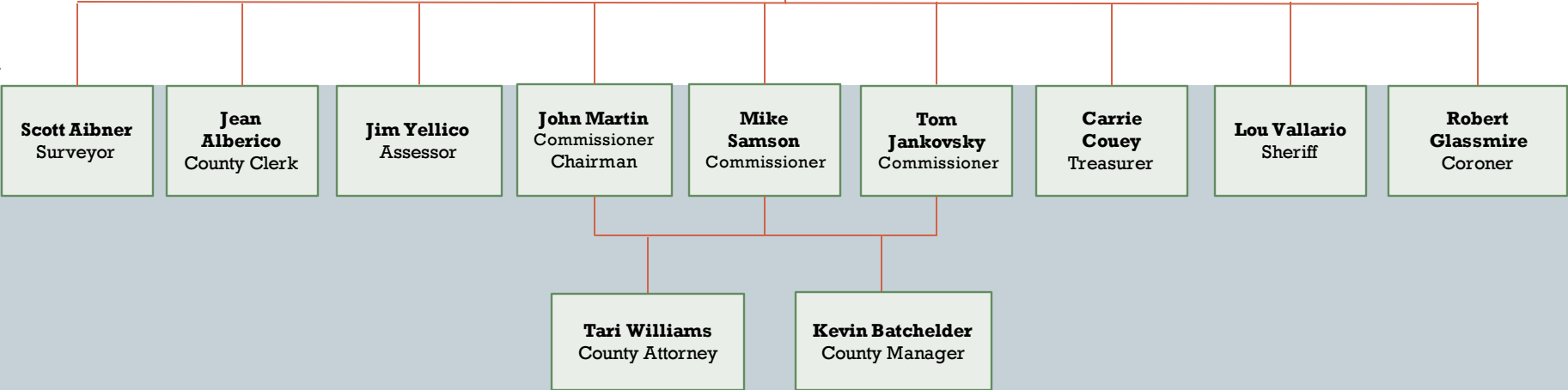
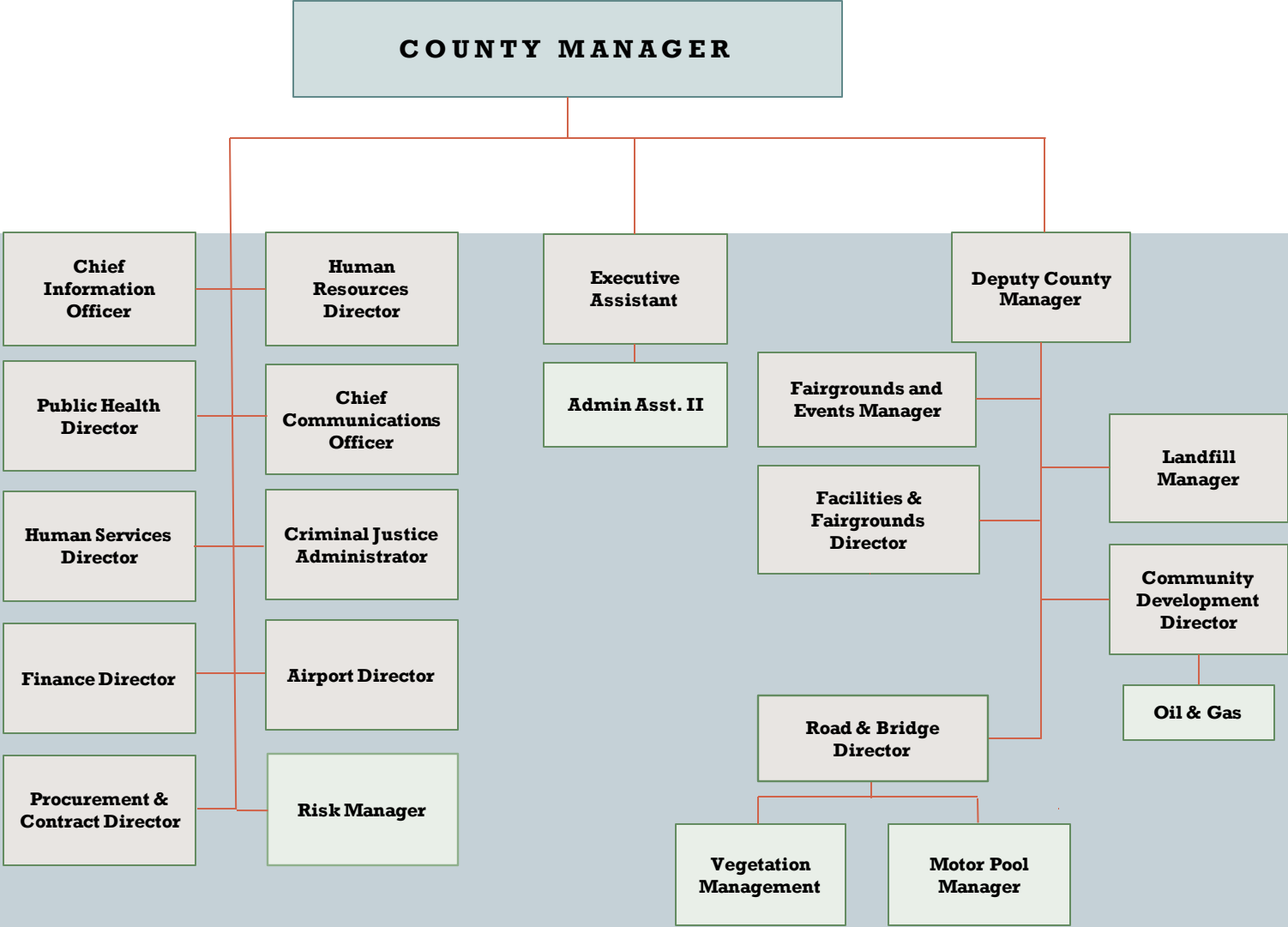


# Elected Officials

**CITIZENS OF GARFIELD COUNTY**



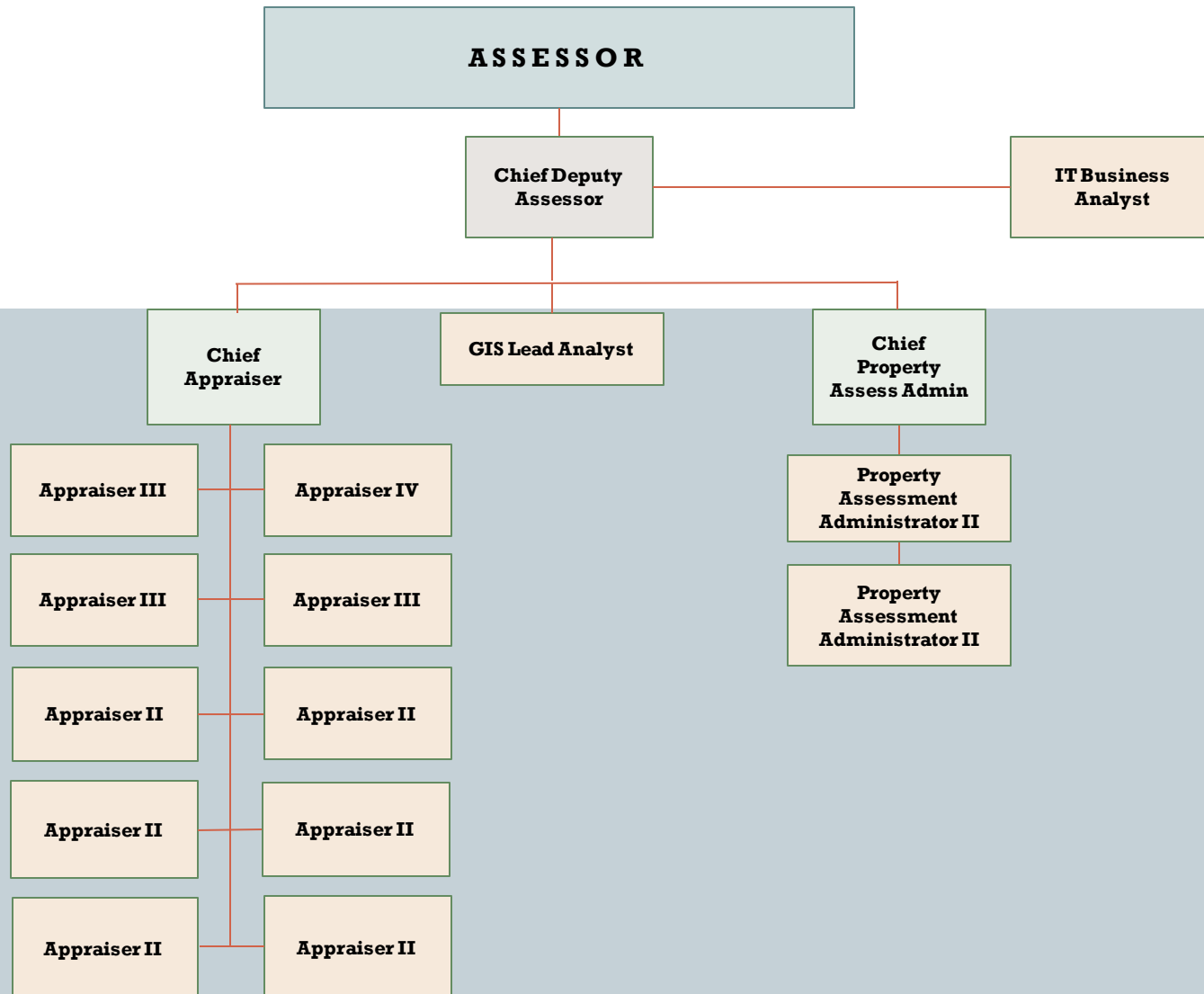
# Administration



# Airport

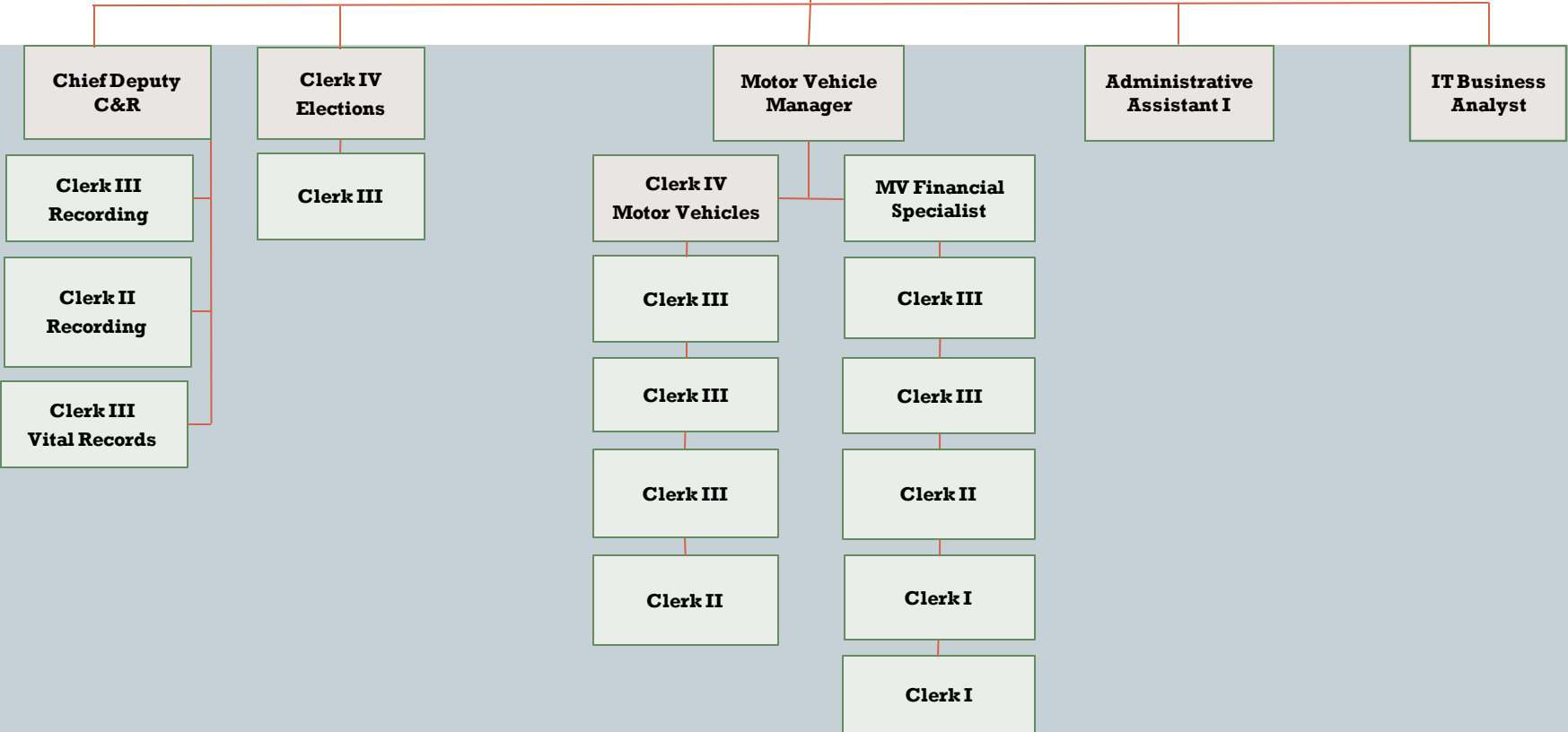


# Assessor's Office



# Clerk & Recorder

**COUNTY CLERK**



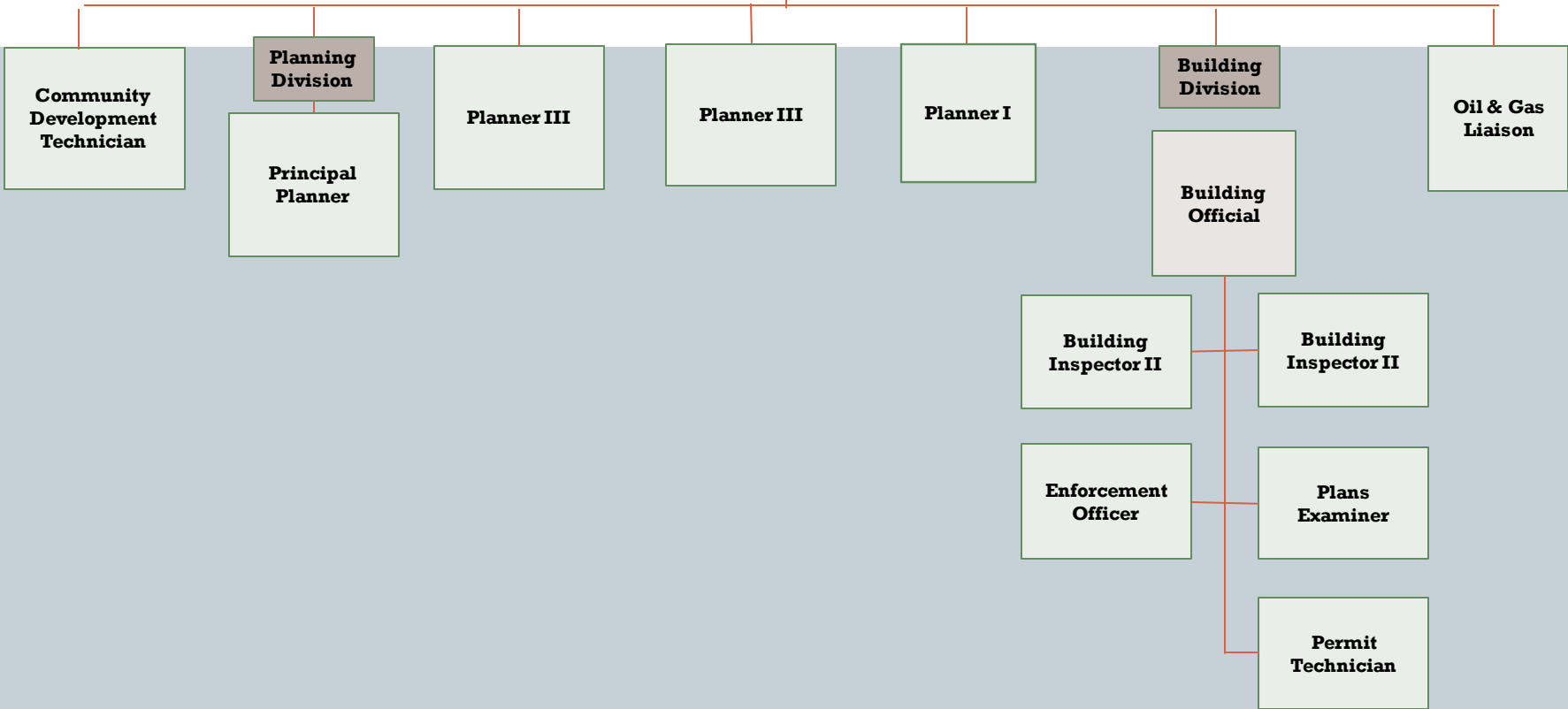
# Communications

**CHIEF COMMUNICATIONS  
OFFICER**

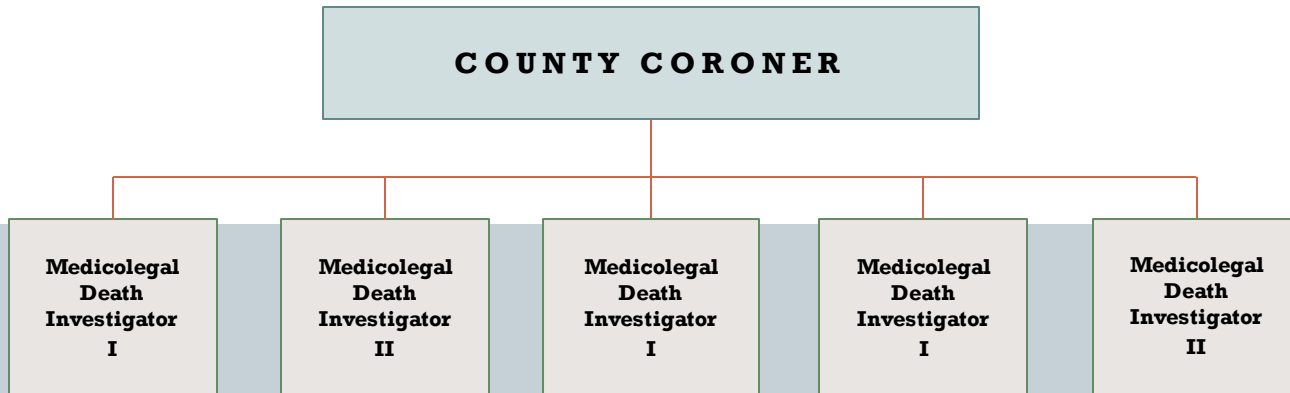


# Community Development

**COMMUNITY DEVELOPMENT DIRECTOR**

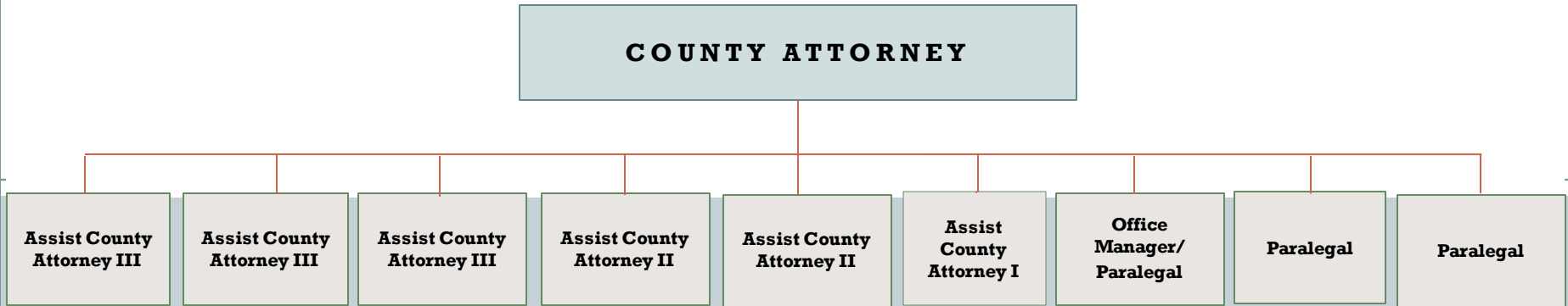


# Coroner



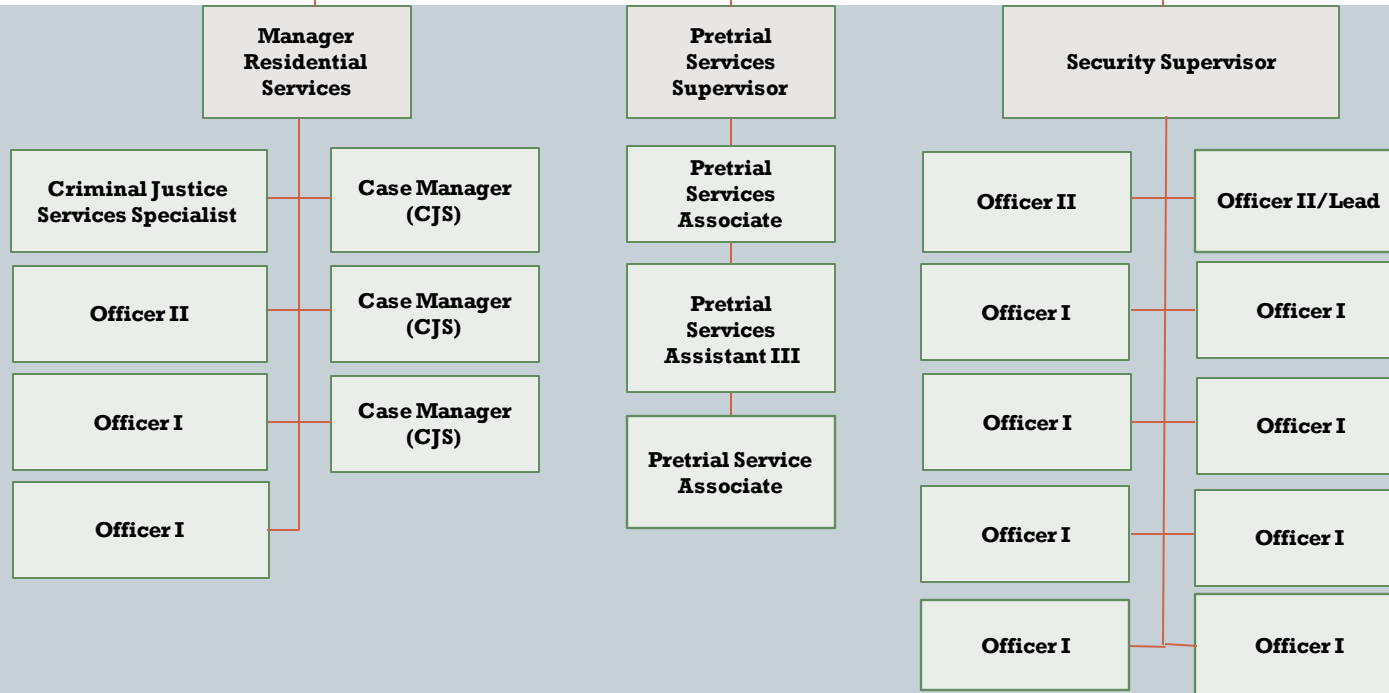


# County Attorney's Office

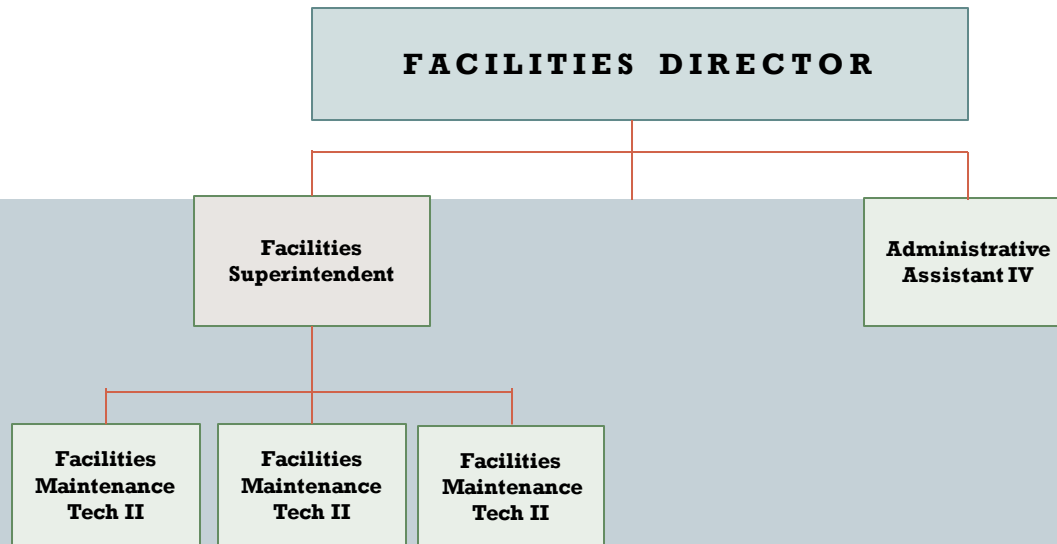


# Criminal Justice

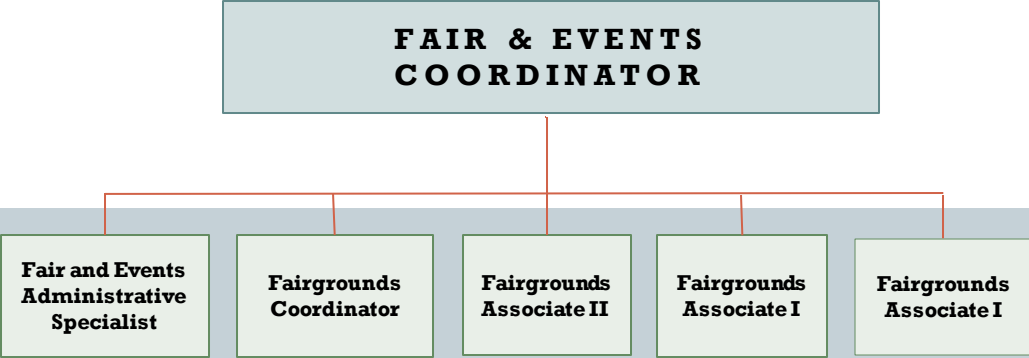
**CRIMINAL JUSTICE SERVICE  
ADMINISTRATOR**



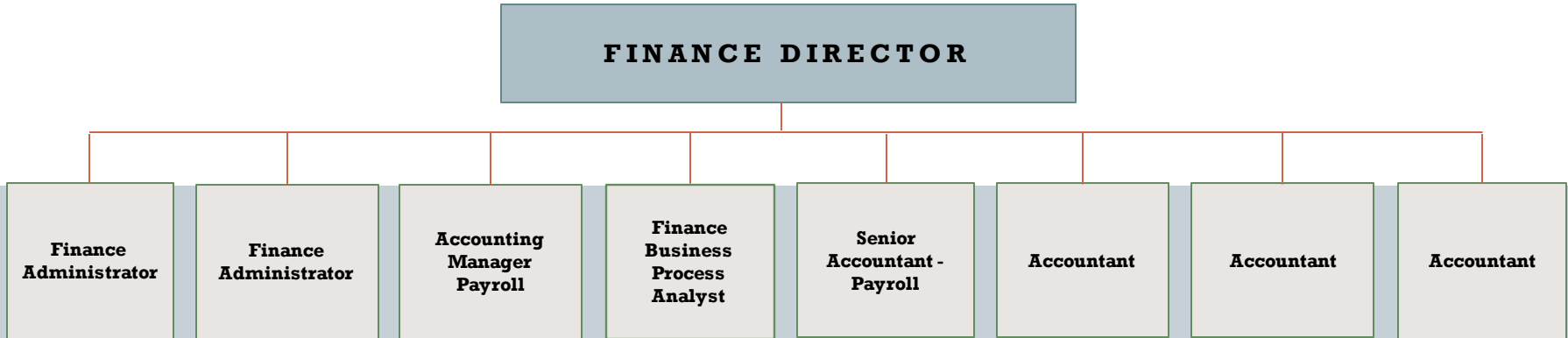
# Facilities Management



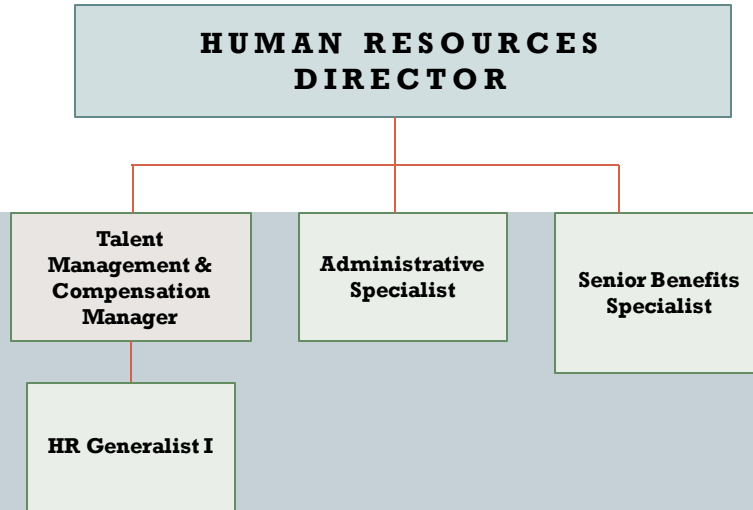
# Fair & Events



# Finance Department



# Human Resources



# Human Services

**HUMAN SERVICES DIRECTOR**

**Division Administrator  
(HS)**

**Unit Manager  
HS**

**Caseworker C**

**Caseworker B**

**Caseworker B**

**Caseworker B**

**Caseworker A**

**Caseworker A**

**Unit Manager  
HS**

**Caseworker A**

**Caseworker B**

**Caseworker B**

**Caseworker B**

**Caseworker C**

**Mental Health  
Specialist**

**Unit  
Manager HS**

**Caseworker/  
Lead**

**Case  
Manager II**

**Case  
Manager I**

**Caseworker  
A**

**Caseworker  
A**

**Unit Manager  
HS**

**Caseworker B**

**Caseworker B**

**Case Services  
Aide II**

**Case Services  
Aide I**

**Case Services  
Aide**

**Administrative  
Assistant I**

# Human Services

**HUMAN SERVICES DIRECTOR**

**Economic Security  
Division Administrator**

**Program Integrity  
Supervisor**

**Supervisor:  
Eligibility-MAGI**

**Supervisor: Adult  
Eligibility**

**Supervisor:  
Eligibility**

**Supervisor:  
Eligibility-MAGI**

**Fraud  
Investigator**

**Eligibility  
Specialist Q&A**

**Eligibility  
Specialist Q&A**

**Eligibility  
Training  
Specialist**

**Eligibility  
Training  
Specialist**

**Eligibility  
Trainer Tech**

**Claims &  
Recovery  
Specialist**

**Eligibility Tech  
B**

**Eligibility Tech  
B**

**Case Manager:  
Employment  
1st**

**Eligibility Tech  
B**

**Eligibility Tech  
A**

**Eligibility Tech  
A**

**Eligibility  
Tech B**

**Eligibility Tech  
B**

**Eligibility  
Tech B**

**Eligibility  
Tech B**

**Eligibility  
Tech A**

**Case  
Manager  
TANF**

**Case  
Manager  
Navigator**

**Case  
Manager  
TANF**

**Eligibility  
Specialist/  
Lead**

**Eligibility  
Tech B**

**Eligibility  
Tech A**

**CCAP &  
Eligibility  
Tech B**

**Case  
Manager:  
TANF**

**CCAP &  
Eligibility  
Tech B**

**Eligibility  
Tech B**

**Eligibility  
Tech B**

**Eligibility Tech  
B**

**Eligibility Tech  
B**

**Eligibility Tech  
B**

**Eligibility Tech  
A**

**Eligibility Tech  
A**

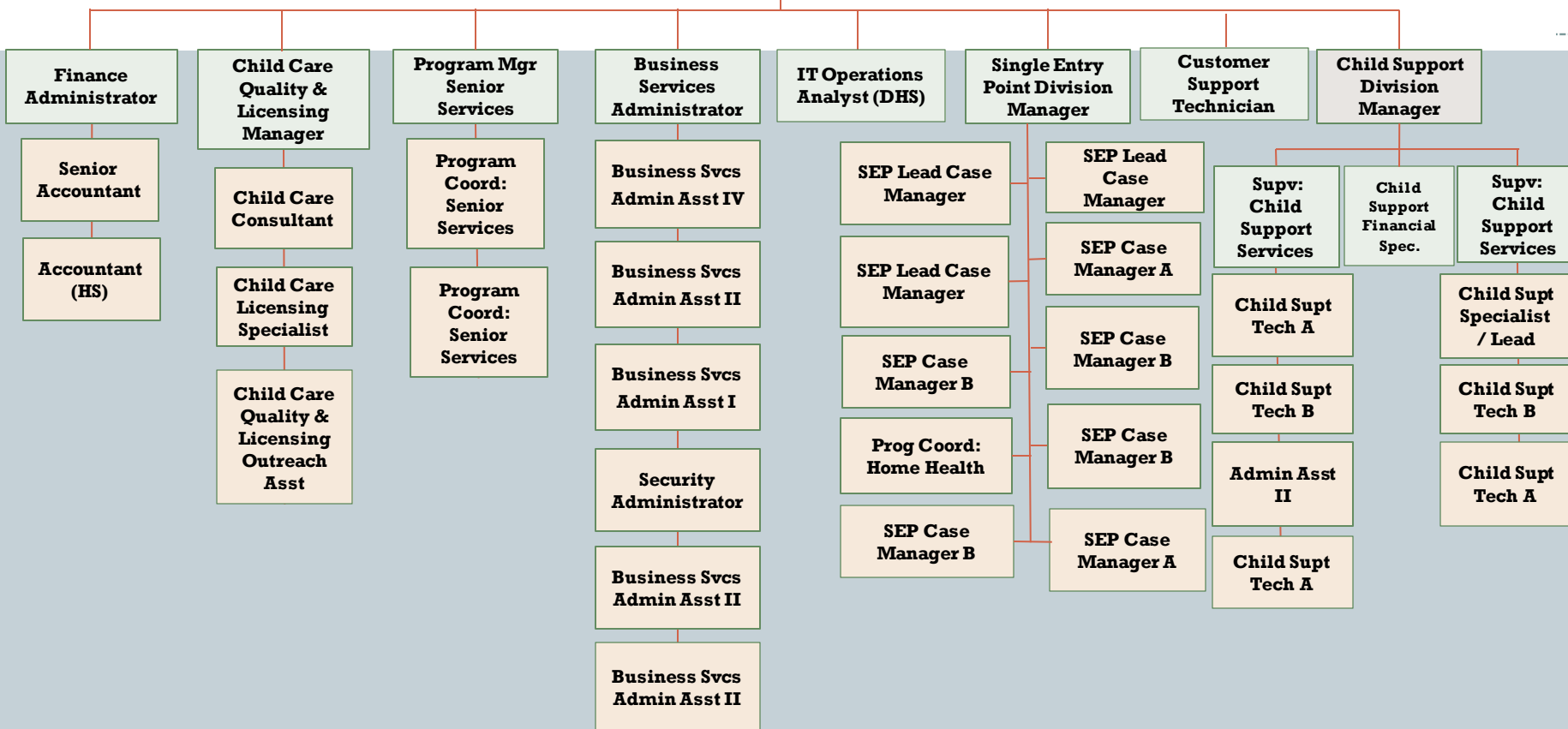
**Eligibility Tech  
A**



# Human Services

**HUMAN SERVICES DIRECTOR**

**Deputy Director**



# Information Technology

**CHIEF INFORMATION  
OFFICER**

**IT Tech**

**Network  
Administrator**

**IT Lead  
Support  
Specialist**

**GIS Analyst  
Developer**

**System  
Administrator**

**IT  
Specialist**

**System  
Administrator  
(Journey  
Level)**

**IT  
Analyst**

# Landfill

**LANDFILL MANAGER**

**Landfill  
Technician**

**Landfill  
Equipment  
Operator/  
Crew Lead**

**Landfill  
Equipment  
Operator**

**Landfill  
Equipment  
Operator**

**Scale House  
Operator**

**Administrative  
Assistant II**

**Landfill  
Equipment  
Operator**

**Landfill  
Equipment  
Operator**

# Motor Pool

**ROAD & BRIDGE DIRECTOR**

**MGR  
Equipment  
Maintenance**

**Motor Pool  
Mechanic**

**Motor Pool  
Mechanic**

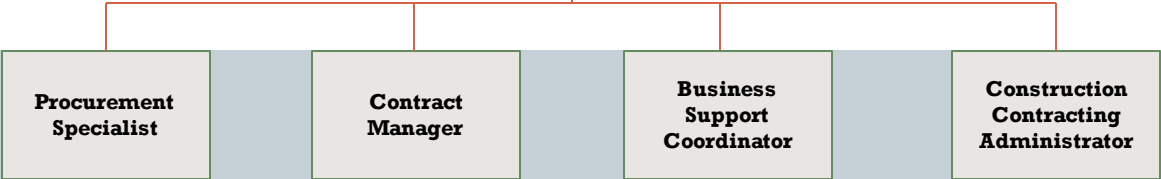
**Heavy  
Equipment  
Mechanic II**

**Heavy  
Equipment  
Mechanic II**

**Heavy  
Equipment  
Mechanic II**

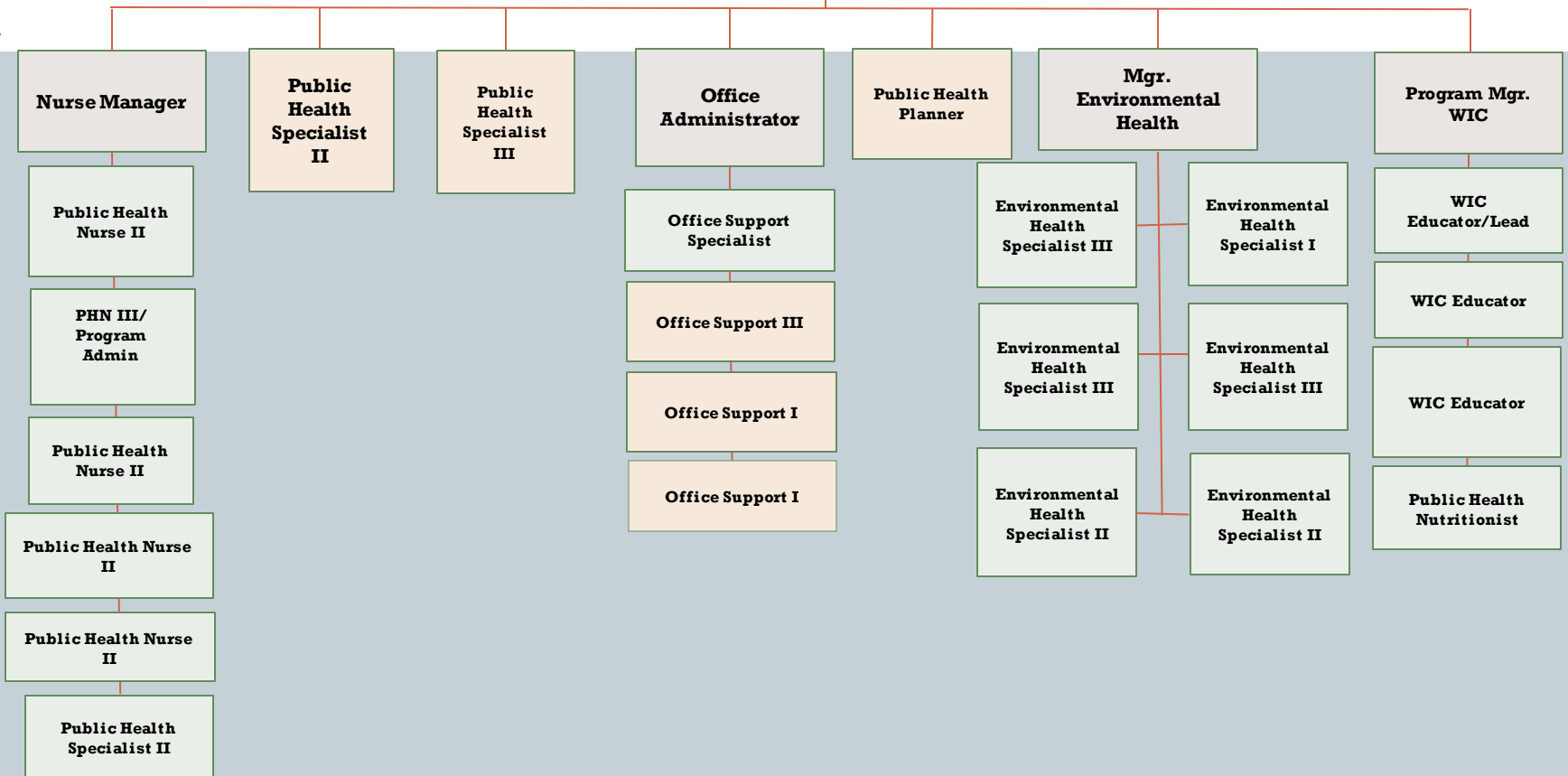
# Procurement Department

**PROCUREMENT &  
CONTRACTS DIRECTOR**



# Public Health

## PUBLIC HEALTH DIRECTOR



# Road & Bridge

**ROAD & BRIDGE DIRECTOR**

**Assistant Director Road & Bridge**

**Admin Foreman**

**Vegetation Management**

**Foreman**

**Foreman**

**Foreman**

**Sign Coordinator**

**Admin Assistant**

**Program Coordinator Vegetation Mgt.**

**Crew Lead**

**Equipment Operator II**

**Equipment Operator I**

**Equipment Operator I**

**Equipment Operator II**

**Equipment Operator I**

**Admin Assistant**

**Equipment Operator I**

**Equipment Operator I**

**Equipment Operator II**

**Equipment Operator I**

**Equipment Operator I**

**Equipment Operator I**

**Equipment Operator II**

**Equipment Operator I**

**Equipment Operator II**

**Equipment Operator I**

**Equipment Operator II**

**Equipment Operator II**

**Equipment Operator II**

**Equipment Operator II**

**Equipment Operator I**

**Equipment Operator II**

**Equipment Operator I**

**Equipment Operator II**

**Equipment Operator II**

**Equipment Operator I**

**Equipment Operator II**

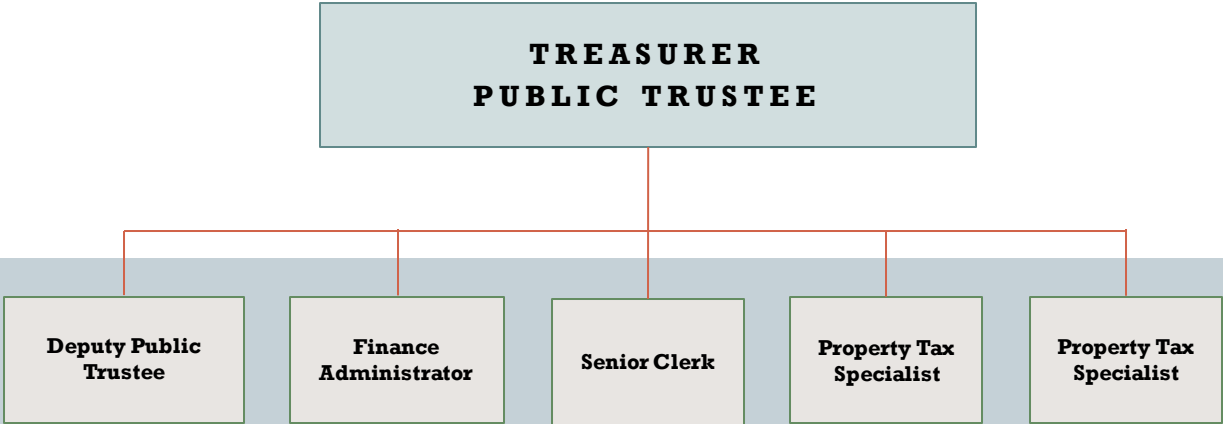
**Equipment Operator I**

**Equipment Operator I**

**Equipment Operator I**

**Equipment Operator II**

# Treasurer's Office





# Vegetation Management

**ROAD & BRIDGE DIRECTOR**

**Manager:  
Vegetation  
Management**

**Program  
Coordinator:  
Vegetation  
Management**