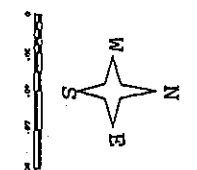


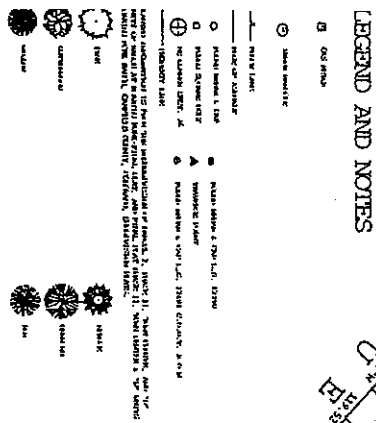
**513181 09/04/1997 10:47A B1032 P503 447**  
**6 of 9 R 0.00 D 0.00 N 0.00 GARFIELD CLERK**



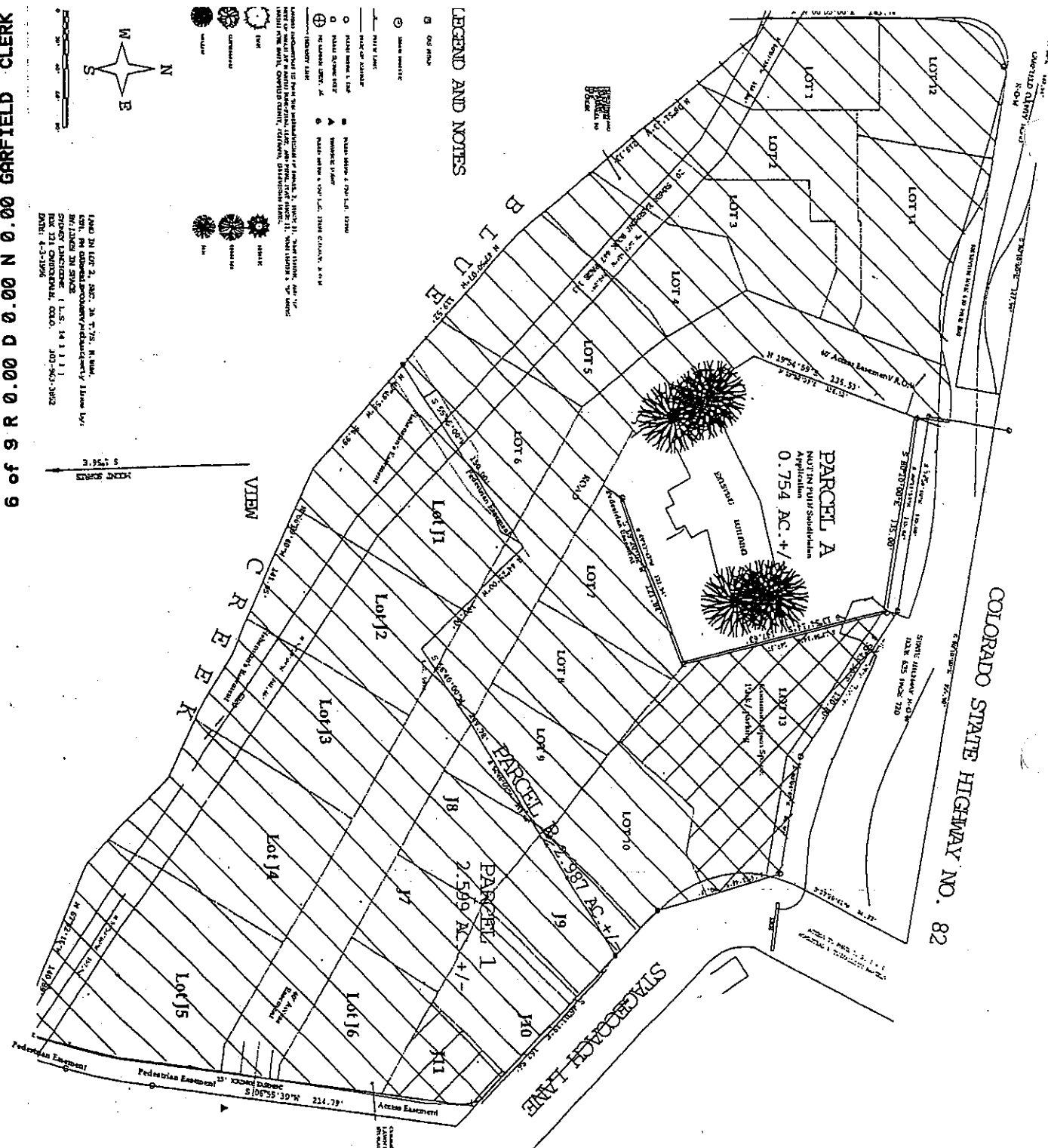
LAND IN LOT 2, SEC. 24, T.75S., R. 88W.,  
 13N., 18N. COBOLTS PLATT/STATION/13/14/15/16/17/  
 18/19/20/21/22/23/24/25/26/27/28/29/30/31/32  
 33/34/35/36/37/38/39/40/41/42/43/44/45/46/47/  
 48/49/50/51/52/53/54/55/56/57/58/59/60/61/62/  
 63/64/65/66/67/68/69/70/71/72/73/74/75/76/  
 77/78/79/80/81/82/83/84/85/86/87/88/89/90/  
 91/92/93/94/95/96/97/98/99/100. 2003-061-0002  
 DMR: 4-3-1996

3.857  
 3.857

3.857  
 3.857



**LEGEND AND NOTES**



**RANCH CREEK**  
 Preliminary P.U.D.  
 and Subdivision  
**ZONING PLAN**

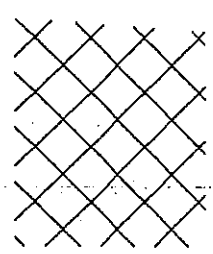
OF PARCEL B, RESUBDIVISION OF PARCEL 2,  
 PHASE II, TOWN CENTER AND "D" UNITS OF  
 RANCH AT BOARDING FORK FINAL PLAT, AND  
 PARCEL 1, FINAL PLAT, PHASE II,  
 TOWN CENTER & "D" UNITS,  
 BOARDING FORK RANCH,  
 GARFIELD COUNTY, COLORADO

**STRYKER/ BROWN**  
**ARCHITECTS**  
 320 South Galois Street  
 Aspen, Colorado 81611  
 970.925.2244 Fax 970.925.3890

Revised: July 22, 1996

**R/SF/PUD**

**P/P: Parking/Park**



**EXHIBIT A**